



jordan fishwick

23 Knutsford Road, SK9 6JB
Guide Price £479,950



This charming Period semi detached home is located within walking distance of Central Wilmslow, being within close proximity of desirable local schools and open countryside! The accommodation is set over three floors and comprises in brief: reception hallway, downstairs W.C. living room with feature wood burning fire, impressive open plan dining/family room, kitchen and a utility room. The first floor comprises two double bedrooms with an en-suite bathroom to the master and further en-suite shower room to bedroom two. The second floor comprises: bedroom three with recess which could offer ideal storage/wardrobe space and an en-suite shower room. To the front there is a driveway which offers off road parking. To the rear there is a low maintenance courtyard style garden which is enclosed via a brick wall boundary. Internal viewings are essential in order to fully appreciate.

**Knutsford Road Wilmslow
SK9 6JB**




Guide Price £479,950



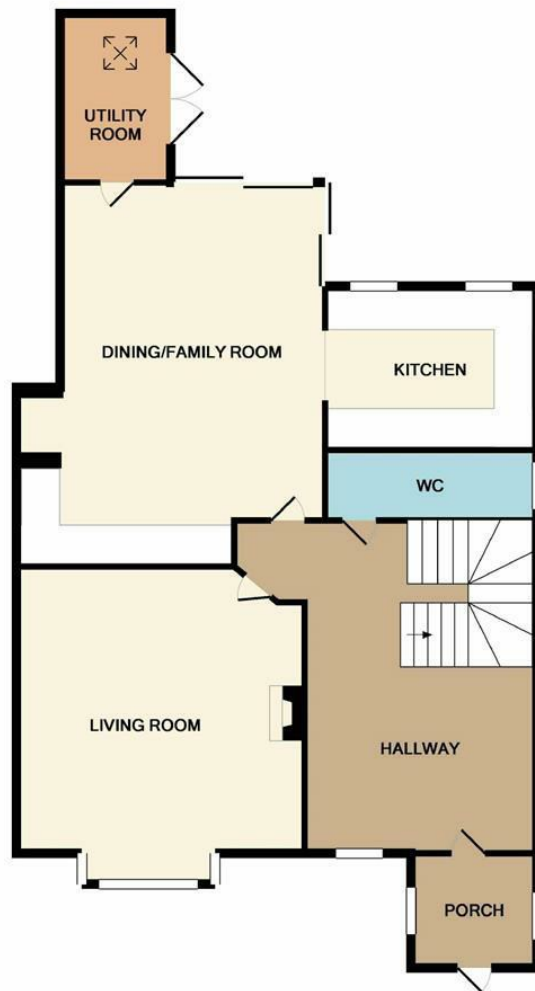


- Refurbished accommodation
- Central Wilmslow location
- Off road parking
- Low maintenance rear garden
- Period property
- Semi detached
- Three bedrooms



Energy Efficiency Rating		
	Current	Potential
Very energy efficient - lower running costs		
(92 plus) A		
(81-91) B		
(69-80) C		
(55-68) D		
(39-54) E		
(21-38) F		
(1-20) G		
Not energy efficient - higher running costs		
England & Wales		EU Directive 2002/91/EC 





GROUND FLOOR



1ST FLOOR



2ND FLOOR

Whilst every attempt has been made to ensure the accuracy of the floor plan contained here, measurements of doors, windows, rooms and any other items are approximate and no responsibility is taken for any error, omission, or mis-statement. This plan is for illustrative purposes only and should be used as such by any prospective purchaser. The services, systems and appliances shown have not been tested and no guarantee as to their operability or efficiency can be given.
Made with Metropix ©2019



These particulars are believed to be accurate but they are not guaranteed and do not form a contract. Neither Jordan Fishwick nor the vendor or lessor accept any responsibility in respect of these particulars, which are not intended to be statements or representations of fact and any intending purchaser or lessee must satisfy himself by inspection or otherwise as to the correctness of each of the statements contained in these particulars. Any floorplans on this brochure are for illustrative purposes only and are not necessarily to scale.

Offices at: Chorlton, Didsbury, Disley, Hale, Glossop, Macclesfield, Manchester Deansgate, Manchester Whitworth Street, New Mills, Sale, Wilmslow and Withington

36-38 Alderley Road, Wilmslow SK91JX
01625 532000

wilmslow@jordanfishwick.co.uk
www.jordanfishwick.co.uk